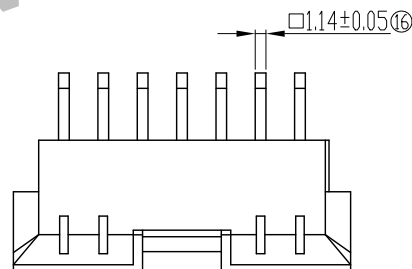


Recommend P.C.B Layout  
(Recommend P.C.B Thick:1.78 Max.)



## Performance characteristics:

### 1.Main body part material

Insulator: see part number rule

Contact terminal: brass,1.27~2μm Ni under plated,  
outer plating see part number rule

### 2.Electrical requirements:

Current rating: 6 A

Voltage rating: 600 V

Contact resistance: ≤10 mΩ

Insulation resistance: ≥1000 MΩ

Withstanding voltage: 1500 Vr.m.s, 1mA, 60s

### 3.Mechanical requirements

Retention force: ≥10 N/pin

### 4.Environment specification

Working temperature: -40℃~105℃

Humidity: ≤93% at 40℃

### 5.Packing & storing

Method of packing: tray, outer box

Storing condition: temperature of -10℃~+40℃  
below 80% relative humidity

### 6.Style of installation: Solder PCB installation

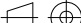

### 7.To prevent the pollution of the environment product info

RoHS agreement: In line with the european union RoHS.

Series code		Terminal number		Spec code		Tail length code		Plating code		Insulator material & color	
1348		XX		2		X		X		X	
Code		Definition		Code		Definition		Code		Definition	
04~24		2		Right Angle		A		B		PA66 Natural UL94V-0	
						3		Matte Sn 3~5μm		D	
						X		Customized		X	

Unless otherwise specified tolerance:

X.	±0.50	X. °	±3°
.X	±0.38	.X°	±2°
.XX	±0.25		

					4. 20mm Pitch Wafer Dual Row Right Angle Type	SL0. 1348. 004			
						Projection	Rev.	Weight	Scale
Mark	NO.	File NO.	Signature	Date			A0		
DRAW		Change Yu 2015. 12. 14							
CHK									
MAN									
STD					1348-XX2-XX-X	All Dimensions in mm		Sheet 1 of 2	
APP						 SHINNING SHENZHEN SHINNING ELECTRONIC CO.,LTD.			

A

B

C

D

E

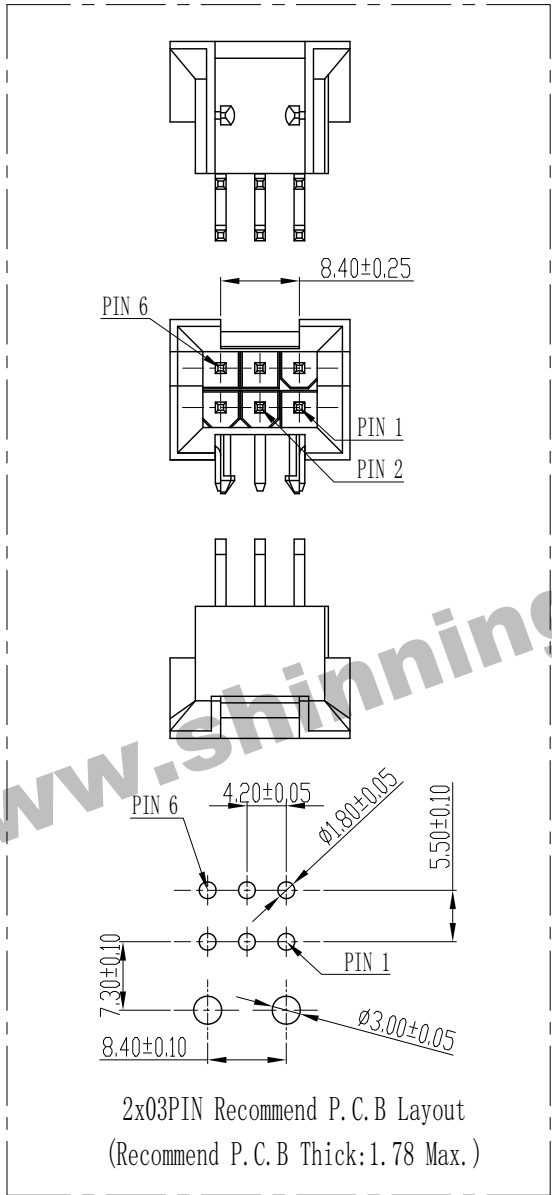
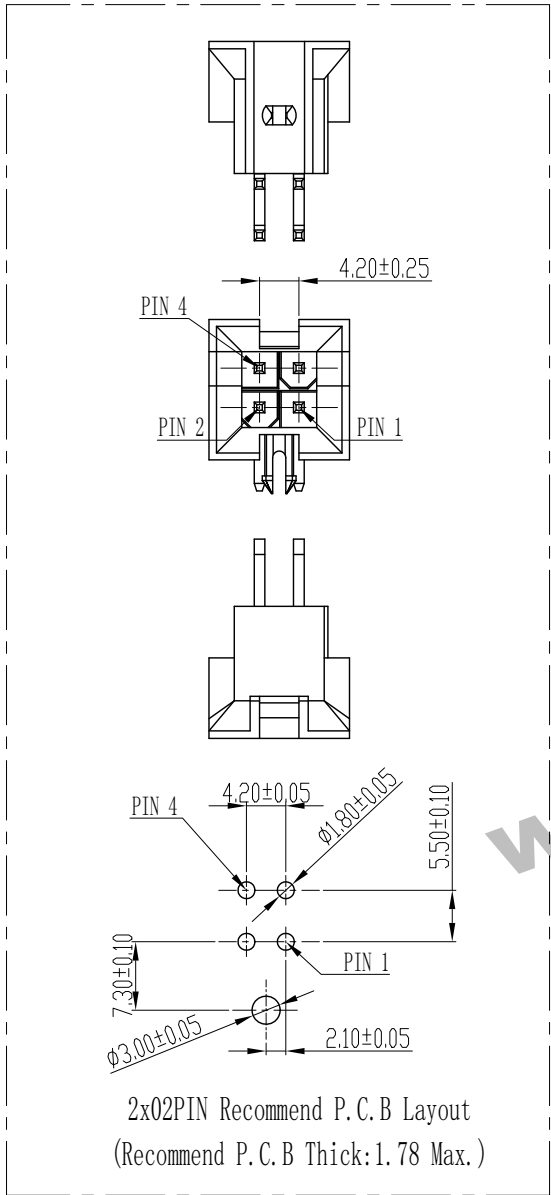
A

B

C

D

E



Terminal Number	M	N	C
2X02	15.00	4.20	4.20
2X03	19.20	8.40	8.40
2X04	23.40	12.60	8.40
2X05	27.60	16.80	8.40
2X06	31.80	21.00	8.40
2X07	36.00	25.20	8.40
2X08	40.20	29.40	8.40
2X09	44.40	33.60	8.40
2X10	48.60	37.80	8.40
2X11	52.80	42.00	8.40
2X12	57.00	46.20	8.40

Unless otherwise specified tolerance:

X.	±0.50	X. °	±3°
.X	±0.38	.X°	±2°
.XX	±0.25		

Mark	NO.	File NO.	Signature	Date	4.20mm Pitch Wafer Dual Row Right Angle Type	SL0. 1348.004			
DRAW		Change Yu	2015.12.14			Projection	Rev.	Weight	Scale
CHK							A0		
MAN						All Dimensions in mm Sheet 2 of 2			
STD					1348-XX2-XX-X	SHINNING SHENZHEN SHINNING ELECTRONIC CO.,LTD.			
APP									