

RECOMMENDED
PANEL CUTOUT DIMENSION

Performance characteristics:

1.Main body part material

Insulator:PBT Black UL94V-0

Contact terminal:Phosphor bronze,1.27~2μm Ni under plated,

Contact area plating Gold Flash,solder plating Sn 3~5μm.

Shield: Copper Alloy Plated with Ni

2.Environment specification

Working temperature: -25℃~80℃

Humidity: ≤93% at 40℃

3.Packing & storing

Method of packing: Tray, outer box

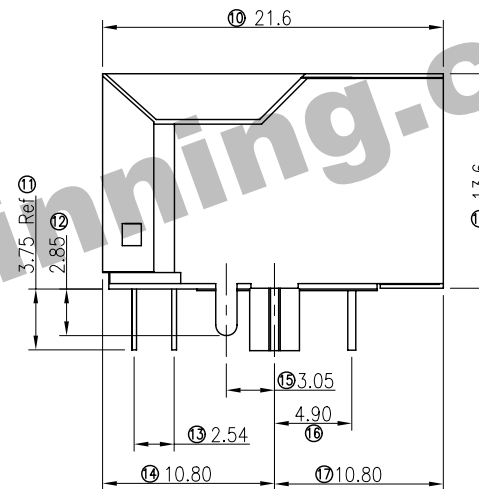
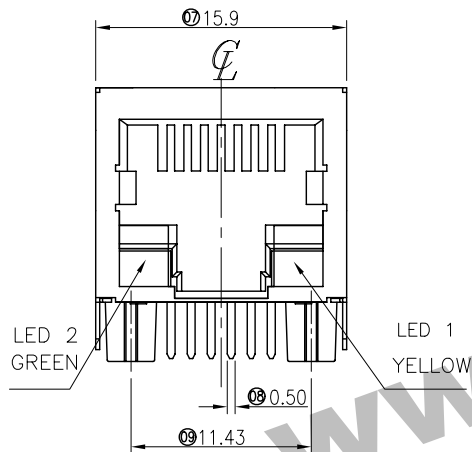
Storing condition: temperature of -10℃~+40℃

below 80% relative humidity

4.Style of installation: solder pcb installation

5.To prevent the pollution of the environment product info

RoHS agreement:In line with the european union RoHS.



Shinning P/N	Megmeet P/N	SPEC.
1605-182-21-1	R30041504	/

Unless otherwise specified tolerance:

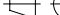
X.	±0.50	X.°	±3°
.X	±0.38	.X°	±2°
.XX	±0.25		

Mark	NO.	File NO.	Signature	Date
DRAW			An.Cheng	2013-10-21
CHK				
MAN				
STD				
APP				

RJ45, CONNECTORS, W/LED, 8P, 8C,
SHIELDED 10/100MBPS, FILTER

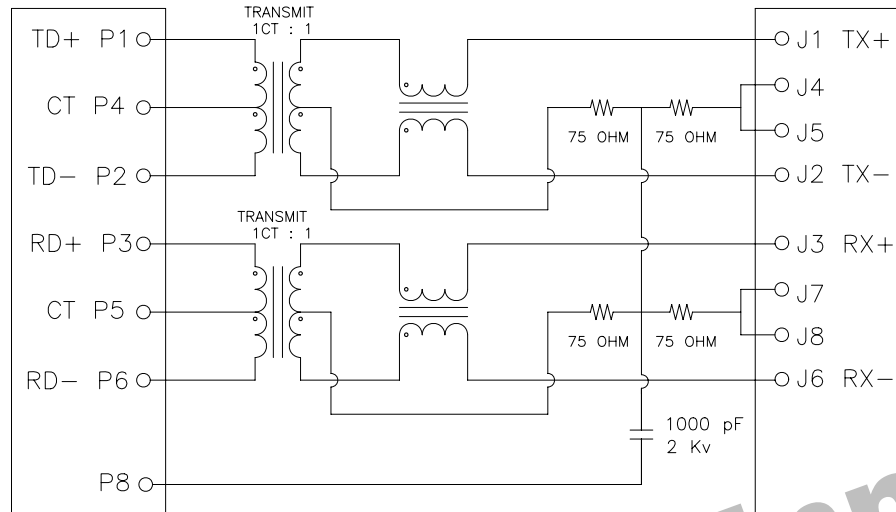
1605-182-21-1

SL0. 1605. 006

Projection	Rev.	Weight	Scale
	A0		
All Dimensions in mm		Sheet 3 of 1	
 SHINNING SHENZHEN SHINNING ELECTRONIC CO.,LTD.			

CONNECTOR SOLDER SIDE

RJ45 CONTACT SIDE



ELECTRICAL CHARACTERISTICS :

TEST NOTES:(25°±5°C)

1. TR:(100KHz,0.1V); 100%

PINS:(P1,P2):(J1,J2)=1:1±3%;(P3,P6):(J3,J6)=1:1±3%

2. LX:(100KHz,100mV,8mA, DC Bias) 100%

PINS:(P1,P2),(P3,P6)=350uH MINIMUM

3. DCR: 100%

PINS:(J1,J2),(J3,J6)=1.2 Ω MAXIMUM

4. HIPOT: 100%

PINS(P1,P2)TO(J1,J2)=1500VAC FOR 2 SECONDS

PINS(P3,P6)TO(J3,J6)=1500VAC FOR 2 SECONDS

5. INSERTION LOSS:

-1.0dB MAXIMUM AT 1MHz TO 100MHz;

6. RETURN LOSS:

-20dB MINIMUM AT 1MHz TO 30MHz;

-15dB MINIMUM AT 30MHz TO 60MHz

-10dB MINIMUM AT 60MHz TO 80MHz

7. CROSS TALK:

-30dB MINIMUM AT 1MHz TO 100MHz

8. COMMON TO COMMON MODE REJECTION:

-30dB MINIMUM AT 1MHz TO 100MHz

Unless otherwise specified tolerance:

X.	±0.50	X.°	±3°
.X	±0.38	.X°	±2°
.XX	±0.25		

Mark	NO.	File NO.	Signature	Date	RJ45, CONNECTORS, W/LED, 8P, 8C, SHIELDED 10/100MBPS, FILTER	SL0. 1605. 006			
DRAW						Projection	Rev.	Weight	Scale
CHK							A0		
MAN						All Dimensions in mm Sheet 3 of 3			
STD									
APP					1605-182-21-1	SHINNING SHENZHEN SHINNING ELECTRONIC CO.,LTD.			