

Performance characteristics:

1. Main body part material

Insulator: Main body LCP Nature color UL94V-0,
Wafer color see part number rule.

Contact terminal: Phosphor Bronze, Ni 1.27 μ m Min.

Underplated over all mate area plating see part number rule, Sn plated at tail

2. Electrical requirements:

Current rating: 1A(70°C), 1.5A(20°C)

Contact resistance: ≤ 20 m Ω

Insulation resistance: ≥ 10000 M Ω

Withstanding voltage: 750 Vr.m.s, 1mA, 60s

3. Mechanical requirements

Insertion force: ≤ 0.75 N/pin

Extraction force: ≥ 0.15 N/pin

4. Environment specification

Working temperature: -55°C ~ +125°C

5. Applicable standard: IEC61076-4-101

6. Packing & storing

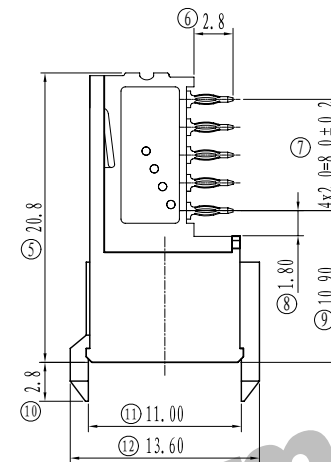
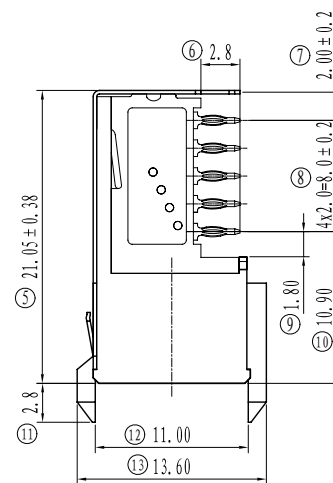
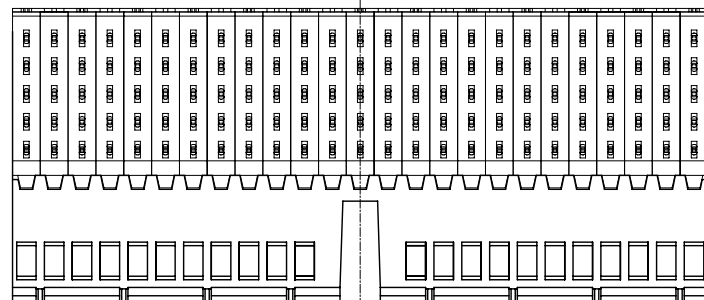
Method of packing: box, inner box, outer box

Storing condition: temperature of -10°C ~ +40°C
below 80% relative humidity

7. Style of installation: Press-fit pcb installation

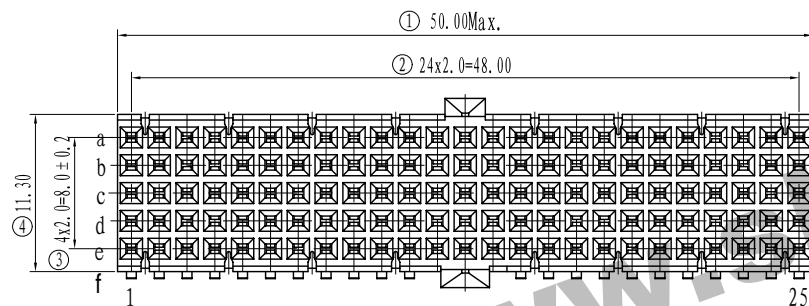
8. To prevent the pollution of the environment product info

RoHS agreement: In line with the european union RoHS

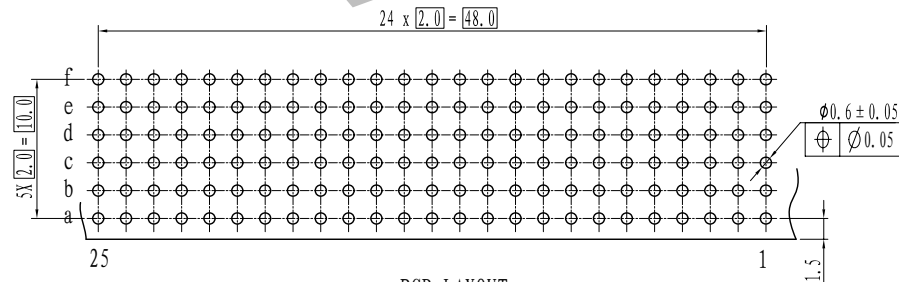


Shielded

non-Shielded



K VIEW

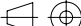



PCB LAYOUT

Series code		Contact pattern code		Spec. code		Plating code		Insulator material&color	
Code	Definition	Code	Definition	Code	Definition	Code	Definition	Code	Definition
001	Standard pattern pin	3	press fit/without peg/shielded	6	Au 0.25 μ m	Sn	Contact plating Tail plating	N	LCP Nature/WAFER LCP Nature UL94V-0
X	Customized	4	press fit/without peg/non-shielded	7	Au 0.38 μ m			F	LCP Nature/WAFER PBT Gray UL94V-0
		X	Customized	8	Au 0.76 μ m			X	Customized
				X	Customized	X	Customized		

Unless otherwise specified tolerance:

X.	± 0.50	X.°	$\pm 3^\circ$
.X	± 0.38	.X°	$\pm 2^\circ$
.XX	± 0.25		

					HM2mm Right Angle Female Press-fit Connector Type AB25	SL0.1727.100			
						Projection	Rev.	Weight	Scale
Mark	NO.	File NO.	Signature	Date			A0		
DRAW	daisyliu 2013.01.17								
CHK					1727-XXX-XX-X	Sheet 1		1 of 1	
MAN						 SHINNING SHENZHEN SHINNING ELECTRONIC CO.,LTD.			
STD									
APP									