

Performance characteristics:

1.Main body part material

Insulator: Main body LCP Nature color UL94V-0,

Wafer color see part number rule.

Contact terminal: Phosphor Bronze, Ni 1.27μm Min.

Underplated over all mate area plating see part number rule, Sn plated at tail

2.Electrical requirements:

Current rating: 1A(70℃), 1.5A(20℃)

Contact resistance: ≤20 mΩ

Insulation resistance: ≥10000 MΩ

Withstanding voltage: 750 Vr.m.s, 1mA, 60s

3.Mechanical requirements

Insertion force: ≤0.75N/pin

Extraction force: ≥0.15N/pin

4.Environment specification

Working temperature: -55℃~+125℃

5.Applicable standard: IEC61076-4-101

6.Packing & storing

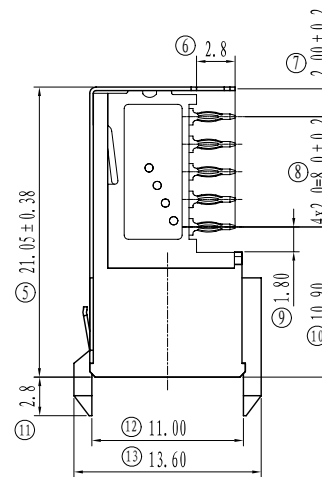
Method of packing: box, inner box, outer box

Storing condition: temperature of -10℃~+40℃
below 80% relative humidity

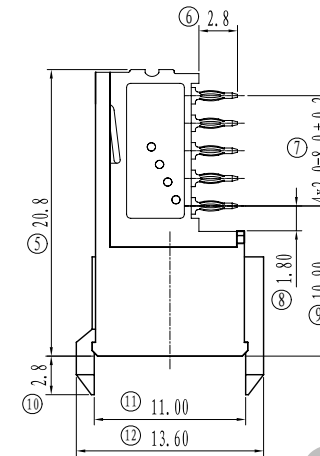
7.Style of installation: Press-fit pcb installation

8.To prevent the pollution of the environment product info

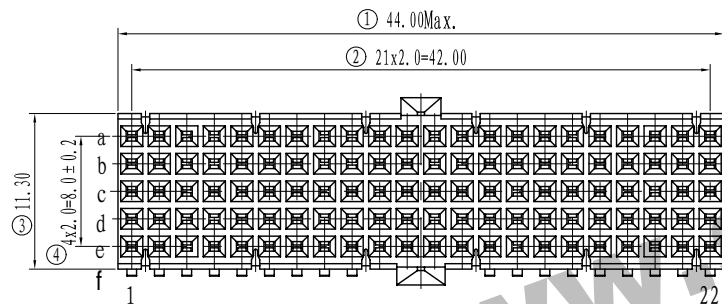
RoHS agreement: In line with the european union RoHS



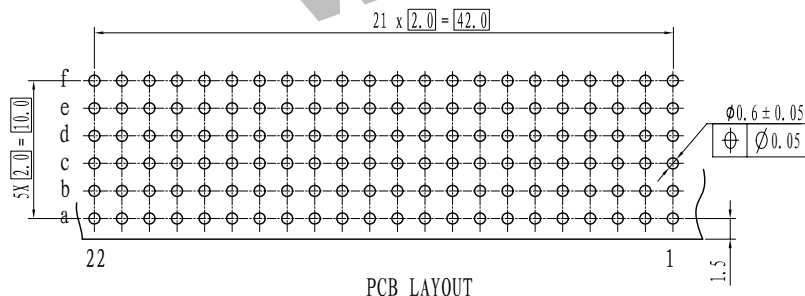
Shielded



non-Shielded



K VIEW



PCB LAYOUT

1726 - XXX- X X - X

Series code		Contact pattern code		Spec. code		Plating code			Insulator material&color	
Code	Definition	Code	Definition	Code	Definition	Code	Definition		Code	Definition
001	Standard pattern pin	3	press fit/without peg/shielded	6	Au 0.25 μm		Contact plating	Tail plating	N	LCP Nature/WAFER LCP Nature UL94V-0
X	Customized	4	press fit/without peg/non-shielded	7	Au 0.38 μm			Sn	F	LCP Nature/WAFER PBT Gray UL94V-0
		X	Customized	8	Au 0.76 μm				X	Customized
				X	Customized	X	Customized			

Unless otherwise specified tolerance:

X.	±0.50	X.°	±3°
.X	±0.38	.X°	±2°
.XX	±0.25		

Mark	NO.	File NO.	Signature	Date	HM2mm Right Angle Female Press-fit Connector Type AB22	SL0.1726.100			
DRAW			daisyliu	2013.01.17		Projection	Rev.	Weight	Scale
CHK							A0		
MAN						Sheet 1 1 of 1			
STD					1726-XXX-XX-X				
APP						SHINNING SHENZHEN SHINNING ELECTRONIC CO.,LTD.			