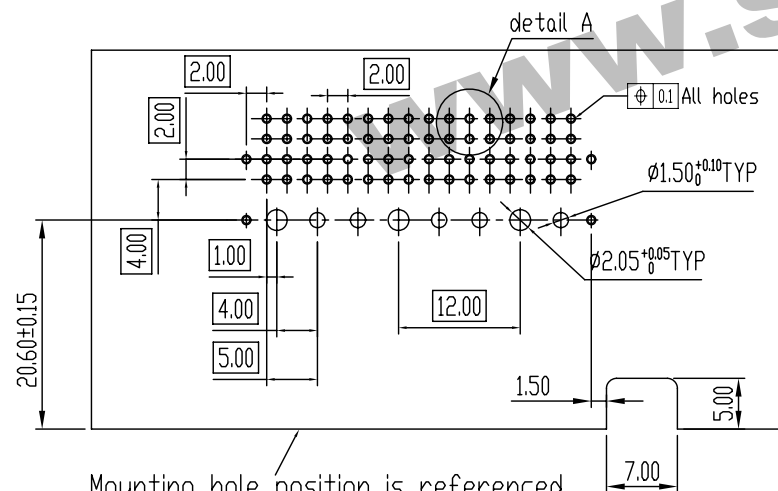


Recommended Frontpanel Cutout dimensions



Mounting hole position is referenced to the Front of frontpanel  
Recommended PCB Layout

Performance characteristics:

1. Main body part material

Insulator: LCP NATURE UL94V-0

Press block: LCP NATURE UL94V-0

Terminal: Phosphor bronze ,plating see spec list  
Shell: SUS

2. Electrical requirements:

Current rating: 1A

Contact resistance:  $\leq 20 \text{ m}\Omega$

Insulation resistance:  $\geq 500 \text{ M}\Omega$

Withstanding voltage: 1000 Vr.m.s, 1mA, 60s

3. Environment specification

Working temperature:  $-55^\circ\text{C} \sim +125^\circ\text{C}$

4. Applicable standard: IEC61076-4-104

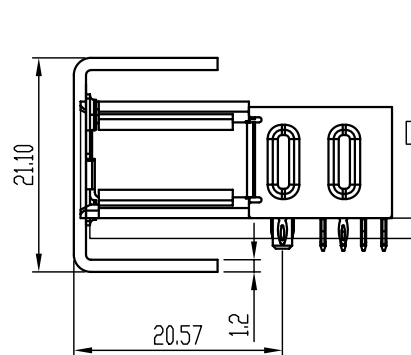
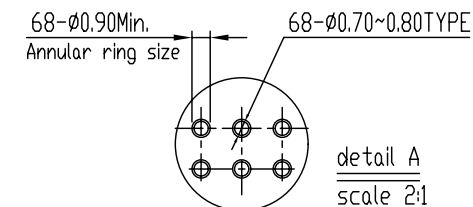
5. Packing & storing

Method of packing: tray, inner box, outer box

Storing condition: temperature of  $-10^\circ\text{C} \sim +40^\circ\text{C}$   
below 80% relative humidity

6. Style of installation: press-fit pcb installation

7. To prevent the pollution of the environment product  
info RoHS agreement: In line with the european union RoHS



Unless otherwise specified tolerance:

X.	$\pm 0.50$	X.°	$\pm 3^\circ$
.X	$\pm 0.38$	.X°	$\pm 2^\circ$
.XX	$\pm 0.25$		

Series code		Spec code		Plating code		Insulator material & color		Pitch of screw nonstandard	
Code	Definition	Code	Definition	Code	Definition	Code	Definition	Code	Definition
416	4*16	0	standard type	7	Au 0.38 $\mu\text{m}$	N	LCP Nature UL94V-0		
				8	Au 0.76 $\mu\text{m}$				
				E	PdNi 0.38 $\mu\text{m}$ +Gold Flash				
				F	PdNi 0.76 $\mu\text{m}$ +Gold Flash				
				K	PdNi 0.76 $\mu\text{m}$ +3u" Au				

Mark	NO.	File NO.	Signature	Date	2.00mm 4*16 male Right angle Press fit CONN. 8.9mm pitch of screw		SL0. 1809. 001			
DRAW							Projection	Rev.	Weight	Scale
CHK					1809-416-0X-N-Z		A0			
MAN							All Dimensions in mm			
STD							Sheet 1 of 1			
APP							SHINNING SHENZHEN SHINNING ELECTRONIC CO. LTD.			