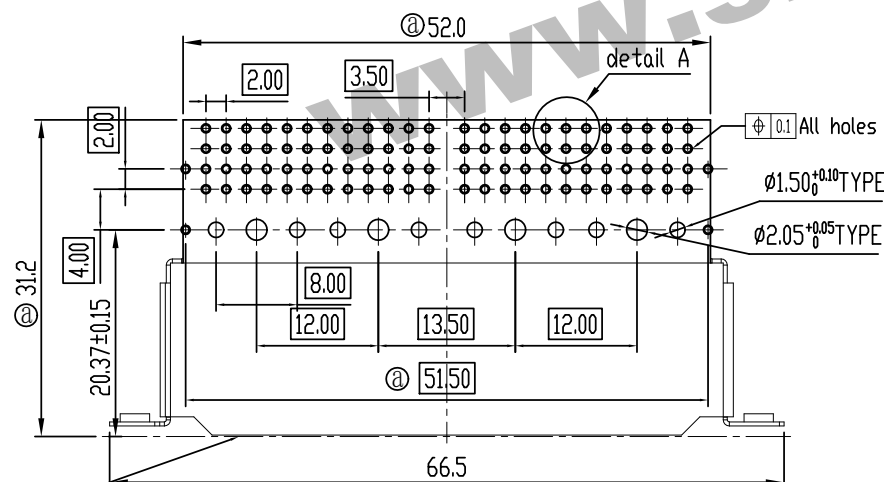
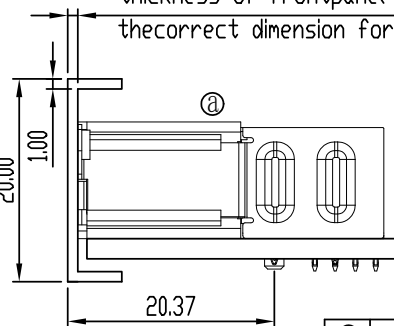


Recommended Frontpanel Cutout dimensions



Mounting hole position is referenced to the Front of frontpanel
Recommended PCB Layout thickness: 2.00±0.05

thickness of frontpanel is required to have the correct dimension for the mounting ears



Unless otherwise specified tolerance:

X.	±0.50	X.°	±3°
.X	±0.38	.X°	±2°
.XX	±0.25		

Performance characteristics:

1. Main body part material
Insulator: LCP NATURE UL94V-0
Press block: LCP NATURE UL94V-0
Terminal: Phosphor bronze ,plating see spec list
Shell: SUS304

2. Electrical requirements:

Current rating: 1A

Contact resistance: ≤50 mΩ

④ Insulation resistance: ≥500 MΩ

Withstanding voltage: 1000 Vr.m.s, 1mA, 60s

3. Environment specification

Working temperature: -55℃~+125℃

4. Applicable standard: IEC61076-4-104

5. Packing & storing

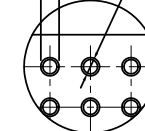
Method of packing: tray, inner box, outer box

Storing condition: temperature of -10℃~+40℃
below 80% relative humidity

6. Style of installation: press-fit pcb installation

7. To prevent the pollution of the environment product
info RoHS agreement: In line with the european union RoHS

100-Ø0.90Min. ④
Annular ring size



detail A
scale 2:1

Series code		Terminal number		Spec code		Plating code		Insulator material & color	
Code	Definition	Code	Definition	Code	Definition	Code	Definition	Code	Definition
424	4*24	0	standard type	7	Au 0.38 μm			N	LCP Nature UL94V-0
				8	Au 0.76 μm				
				E	PdNi 0.38 μm+Gold Flash				
				F	PdNi 0.76 μm+Gold Flash				
				K	PdNi 0.76 μm+Au0.076 μm				

①	8	65533	Lawrence	2015.11.20
②	1	58800	Lawrence	2015.10.10
③	8	SN-00002017	Lawrence	2012.07.09
Mark	NO.	File NO.	Signature	Date
DRAW			Lawrence	2012.06.12
CHK				
MAN				
STD				
APP				

2.00mm 4*24 male Right angle
Press fit CONN.

1809-424-0X-N

SL0. 1809. 101

Projection	Rev.	Weight	Scale
⊕	A3		

All Dimensions in mm Sheet 1 of 1

SHINNING SHENZHEN SHINNING ELECTRONIC CO. LTD.