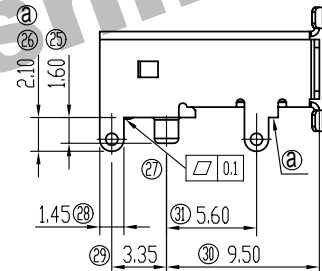
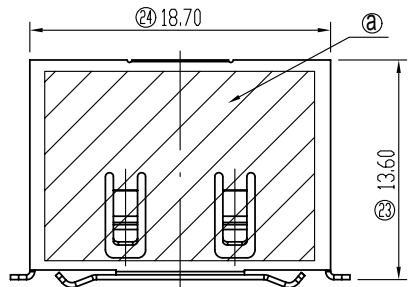
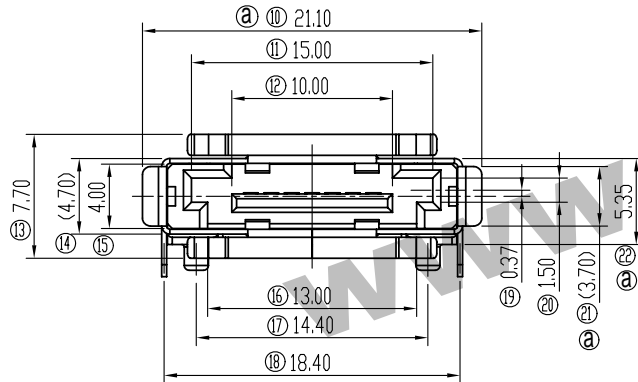


RECOMMEND P.C.BOARD MOUNTING DIMENSIONS t=1.60mm
PCB TOLERANCE:±0.05



- Performance characteristics:
- 1.Main body part material
Insulator: LCP Black UL94V-0
Contact terminal: Copper alloy, 1.27μm Ni under plated, outer plating see part number rule.
 - ⑤ Shell: Copper alloy, 1.27μm Ni plated all.
 - 2.Electrical requirements:
Contact resistance: < 30 mΩ
Insulation resistance: > 1000 MΩ
Withstanding voltage: 500 Vr.m.s, 1mA, 60s
 - 3.Mechanical requirements
Mechanical life: 2500 cycles
 - 4.Environment specification
Working temperature: -25℃ ~ +85℃
 - 5.Packing & storing
Method of packing: Carry tape, outer box
Storing condition: temperature of -10℃ ~ +40℃
below 80% relative humidity
 - 6.Style of installation: SMT
 - 7.To prevent the pollution of the environment product info: In line with the european union RoHS

1877 - XX X - X X - X		Series code		Terminal number		SPEC code		Shell Tail long code		Plating code		Insulator material & color	
		07		7PIN		Code		Code		Code		Code	
						Definition		Definition		Definition		Definition	
						M		p		5		3	
						Right angle		Shell Tail 2.15		Gold flash		LCP BLACK	
						SMT standard		WITH POST		Au 0.25 μm		UL94V-0	
										Au 0.38 μm			
										Au 0.76 μm			
										PdNi0.38 μm+Goldflash			
										PdNi0.76 μm+Goldflash			
										Customized			

Unless otherwise specified tolerance:

X.	±0.50	X°	±3°
.X	±0.38	X°	±2°
.XX	±0.25		

⑤		1	SN-00003397	LAWRENCE	2014.02.13	E SATA 7Pin Male		SL0.1877.001			
⑥		6	SN-00003222	LAWRENCE	2013.11.25			PROJECTION	REV.	WEIGHT	SCALE
MARK		NO.		FILE NO.	SIGNATURE	DATE					
DRAW				LAWRENCE							
CHK											
MAN											
STD											
APP											

1877-07M-PX-3